



PUBLIC HEALTH NEWS AND REPORTS

STRAIGHT FROM THE SOURCE

ISSUE 21 DECEMBER 11, 2020

Straight from the Source

Issues can be found at:

www.GPHOhio.org

Want our newsletter sent to you?

Email us to get on the list!

info@GeaugaCountyHealth.org

*We need YOUR input to help
keep Geauga County
businesses open!*

*Click the link below to access
a brief survey about business
operations during COVID-19.*

[https://www.surveymonkey.com/r/
Geauga_Public_Input_COVID-19](https://www.surveymonkey.com/r/Geauga_Public_Input_COVID-19)

COVID-19 Resources

CDC: www.cdc.gov/coronavirus

ODH: www.coronavirus.ohio.gov

ODH COVID-19 Call Center

1-833-4-ASK-ODH

(1-833-427-5634)

9 a.m. to 8 p.m. 7 days/week.

ODH COVID-19 Compliance Line:

1-833-427-5634



Follow us on Facebook for updates!

Facebook @GPHOhio

*Please be aware that comments are not
monitored and questions should be
emailed to Geauga Public Health.*

Health Commissioner update:

Our new COVID-19 case numbers in Geauga County continue to climb. We have seen an increase in new cases for several consecutive months. The situation is even worse for many of our neighbors across Northeast Ohio. Several have entered the highest level in the Ohio Public Health Advisory System (purple). That level comes with guidance to only leave home for essential purposes (work, food, medical care). This is not simply a byproduct of more testing. Our testing in Ohio has increased but not at the same rate as our cases have. These large case counts have consequences. The hospital beds are filling up. The hospital workforce is stressed as is the public health workforce. The more community spread we see, the more likely it will find its way to those who work in congregate environments with populations at much higher risk of severe illness and death. We have been very fortunate in Geauga County over these past several months but we can't forget the lives lost early on when we had the outbreaks in the long term care facilities.

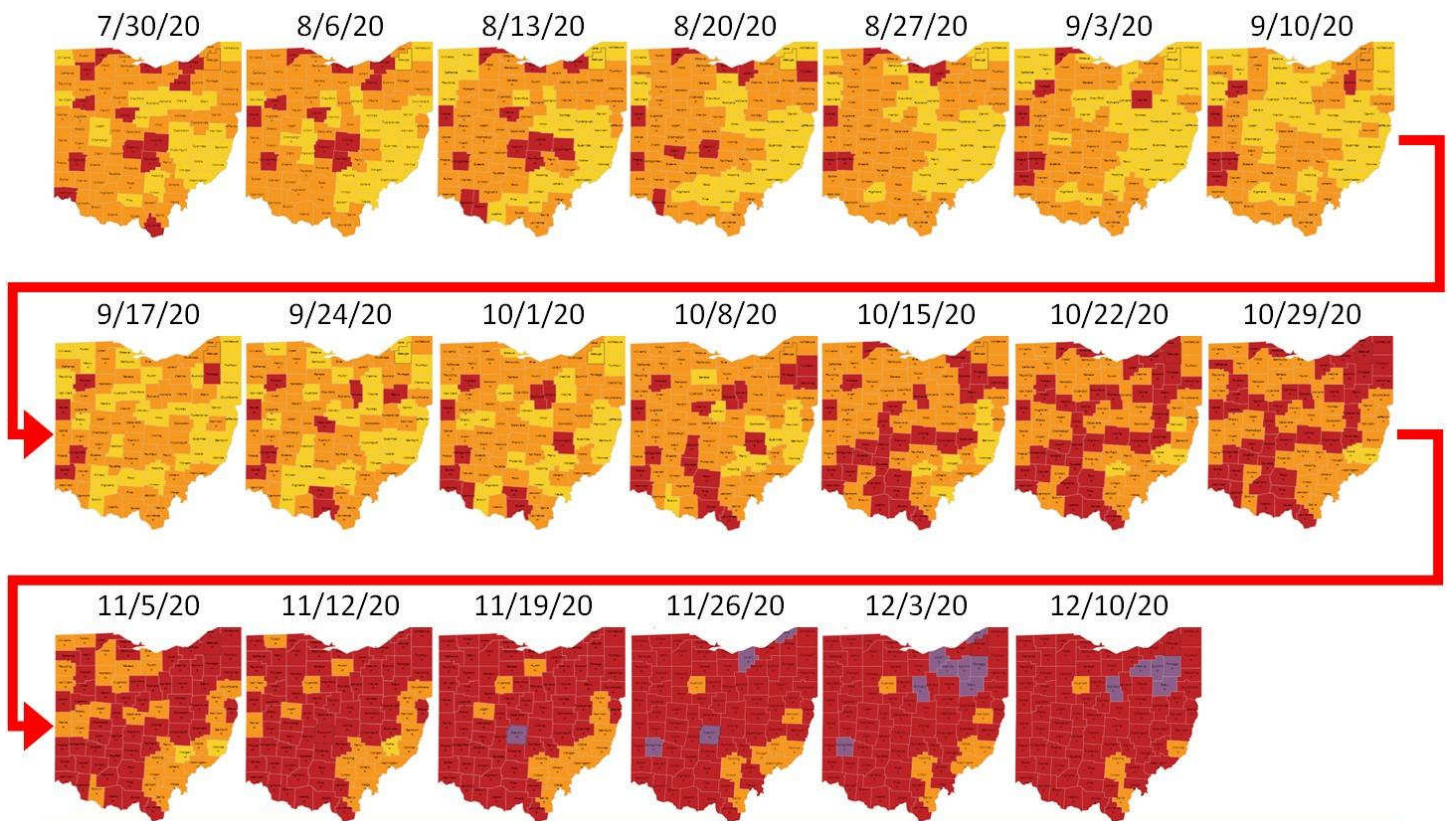
I am so incredibly THANKFUL for all of you who have been diligently implementing the simple prevention measures that we know work. Please keep it up! Prevention is often inconvenient and sometimes requires sacrifice, especially at this time of year. The holiday season is a time of bringing people together to remind us of our connectedness to one another as members of families and circles of friends. It would help us if we began to consider a larger familial circle that encompassed our county, our state, and our nation. Please be thoughtful as you are thankful.

Remember to reach out to those friends and family who may be experiencing increased social isolation due to COVID-19. The holidays can be especially lonely for many among us and it is a great time to give them a call, send an email, or even write them a letter. We are all in this together.

Finally, I want to take this opportunity to announce that we have convened a small group of business leaders to partner with us in public health to help frame and deliver messaging that might resonate with a broader audience. There are so many reasons why we should all be working together to reduce the spread of this disease. There are personal consequences, economic consequences, educational consequences, and psychological and emotional consequences. We all know someone, I would even go so far as to say, everyone we know, is facing one or more of these consequences of the pandemic. This just underscores the need for us all to work together to get through this incredibly challenging time.

The Geauga County Board of Health regular monthly meeting occurs on the 4th Wednesday of each month at 5:00pm in Building #8 at 470 Center Street in Chardon, Ohio. There is an opportunity for public comment. Masks are required and non-household members must separate by 6 feet or more and space may be limited as a result.

Ohio Public Health Advisory System Historical Trend



Ohio COVID-19 Risk Level Guidelines for the Public

| LEVEL 1 | LEVEL 2 | LEVEL 3 | LEVEL 4 |
|--|--|---|---|
| Public Emergency Active exposure and spread. Follow all current health orders. | Public Emergency Increased exposure and spread. Exercise high degree of caution. Follow all current health orders. | Public Emergency Very high exposure and spread. Limit activities as much as possible. Follow all current health orders. | Public Emergency Severe exposure and spread. Only leave home for supplies and services. Follow all current health orders. |

**TOGETHER, WE CAN
REDUCE THE SPREAD!**



SPACE

Keep a distance of AT LEAST 6 feet from others.



FACE

SMILE WITH YOUR EYES and keep your mask up.



GRACE

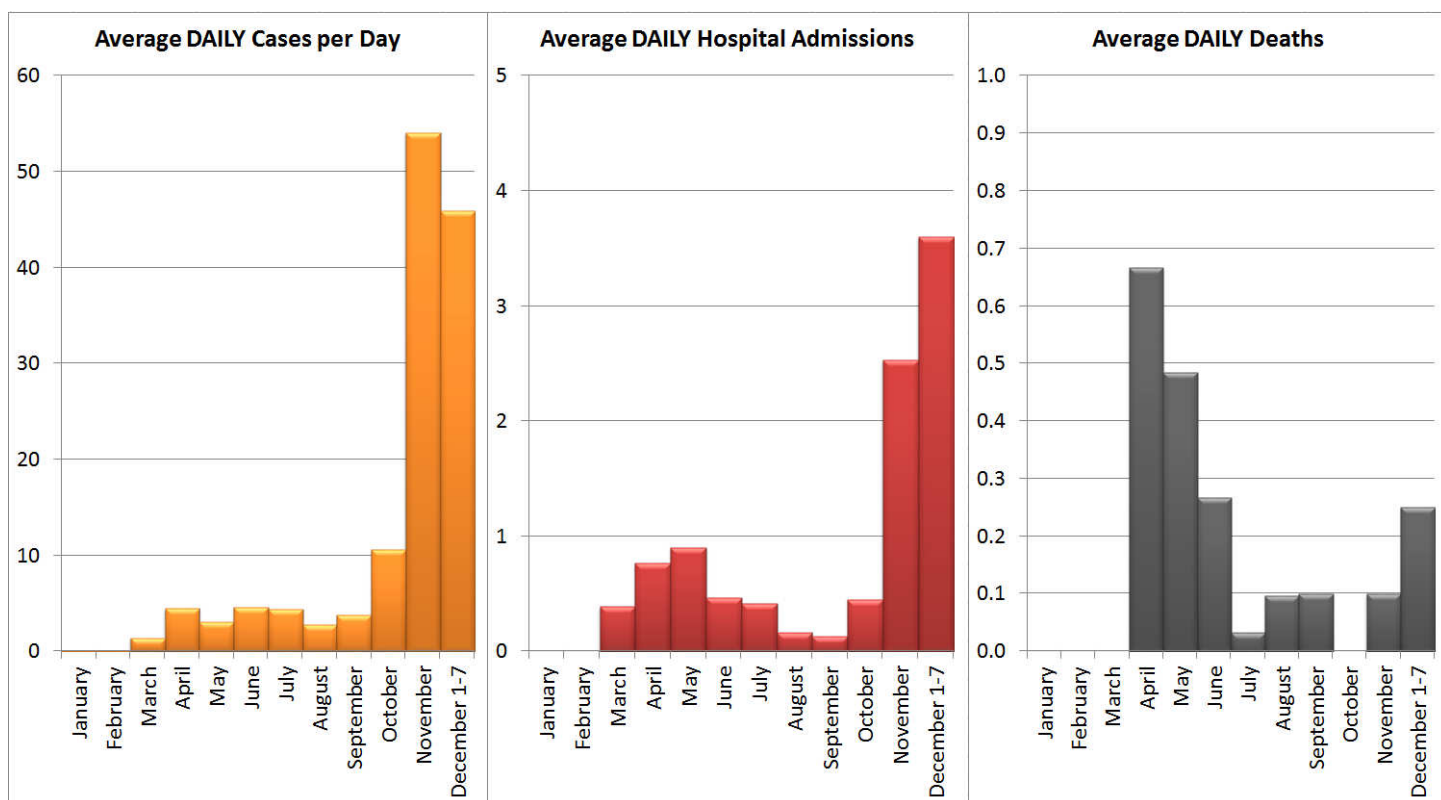
Please be considerate of others.

What is the relationship between CASE data and HOSPITALIZATION data?

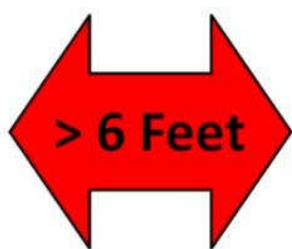
In Geauga County's experience so far (through 12/9/2020), approximately 15% of people diagnosed with COVID-19 have been admitted to the hospital. The average lag time between being identified as a case and the date of hospital admission for those individuals has been about 5 days. Approximately one in four have a lag time of one week or more between when they are identified as a case and when they are admitted to the hospital.

What is the relationship between CASE data and MORTALITY data?

In Geauga County's experience so far (through 12/9/2020), 3.67% of people diagnosed with COVID-19 have died as a consequence. The average lag time between being identified as a case and the date of death for those individuals has been 12 days. 60% of those who die have a lag time of one week or more after becoming a case.



**TOGETHER, WE CAN
REDUCE THE SPREAD!**



SPACE

Keep a distance of AT LEAST 6 feet from others.



FACE

SMILE WITH YOUR EYES and keep your mask up.



GRACE

Please be considerate of others.

THIS HOLIDAY SEASON, #InThisTogetherGeauga

Feeling the holiday blues? You are not alone.

The Geauga Suicide Prevention Coalition challenges you to connect with five people every day. Follow along for new ideas this season.

**HOLD A SOCIALLY DISTANCED
SLEDDING OR SKIING GATHERING**

**ORGANIZE A DRIVE-BY CAROLING
EVENT TO SURPRISE LOVED ONES**

**HOLD A VIRTUAL SNOWMAN BUILDING
CONTEST AND SHARE PHOTOS ONLINE**

**ASK FAMILY & FRIENDS TO WRITE OR
SHARE THEIR FAVORITE POEM**

**MAKE A HOLIDAY PLAYLIST & ASK
LOVED ONES TO EACH ADD A SONG**

The Geauga Suicide Prevention Coalition
#Strive5OH #InThisTogetherGeauga



| Long-Term Care Facilities | NEW CASES (Data Last Updated: 12/11/2020) | |
|----------------------------------|--|--------------|
| | Residents | Staff |
| Amelia Grace | 0 | 0 |
| Arden Courts of Chagrin Falls | 0 | 1 |
| Burton Healthcare and Rehab | 2 | 4 |
| Chardon Healthcare | 59 | 16 |
| Heather Hill Care Communities | 29 | 13 |
| Jennings at Notre Dame | 0 | 3 |
| Mapleview Country Villa | 13 | 2 |
| Maplewood Senior Living | 22 | 11 |
| Ohman Family at Blossom Hill | 39 | 20 |
| Ohman Family at Briar Hill | 5 | 2 |
| Ohman Family at Holly Hill | 5 | 4 |
| Residence of Chardon | 12 | 4 |
| South Franklin Circle | 0 | 2 |
| The Weils | 3 | 2 |

| SCHOOLS | NEW CASES (Data Last Updated: 12/10/2020) | |
|--------------------------------|--|--------------|
| | Students | Staff |
| Agape Christian Academy | 0 | 2 |
| Berkshire Local | 0 | 1 |
| Cardinal Local | 0 | 4 |
| Chardon Local | 7 | 7 |
| Hawken School | 0 | 0 |
| Heritage Classical Academy | 0 | 0 |
| Hershey Montessori Farm School | 0 | 0 |
| Kenston Local | 9 | 5 |
| Notre Dame School | 0 | 0 |
| Notre Dame-Cathedral Latin | 0 | 0 |
| St Anselm | 2 | 0 |
| St Helen | 0 | 0 |
| St Mary | 1 | 0 |
| West Geauga Local | 12 | 3 |



GEAUGA PUBLIC HEALTH

Promoting and Protecting Community Health

470 Center St., Building 8, Chardon, OH 44024-1071
440.279.1900 www.gphohio.org

*Thomas Quade,
Health Commissioner*

*Carol Straniero
Director, Population Health*

*David Sage
Director, Environmental Health*

*Alta Wendell
Director, Administration*

BACK TO SCHOOL IMMUNIZATION WALK-IN CLINICS

GEAUGA COUNTY HEALTH DEPT
470 CENTER STREET, BUILDING 8
CHARDON, OHIO 44024

**WEDNESDAY JANUARY 27TH
AND
WEDNESDAY FEBRUARY 24TH
9 AM TO NOON**

You must call to pre-register! Spots fill up fast!

440-279-1950

AVAILABLE FOR THOSE WHO **DO NOT** CARRY INSURANCE
ADMINISTRATION FEE FOR GEAUGA COUNTY RESIDENTS: \$5 PER CHILD
OUT OF COUNTY RESIDENTS: \$10 PER CHILD

MASKS REQUIRED * REMEMBER TO KEEP YOUR DISTANCE

PLEASE STAY HOME IF YOU ARE NOT WELL

A note about changing guidance from the CDC on quarantining of contacts of COVID-19 cases

The CDC has revised its guidance regarding quarantine periods for contacts of people with COVID-19. Please note, the CDC does not establish rules. They simply issue guidance. First, they STILL consider 14 days to be the best duration of quarantine as there are a number of people who don't show symptoms until after day 10 of their quarantine.

However, the CDC is revising their guidance to suggest that it is acceptable, though still not desirable, to leave quarantine for cause (work, etc.) at 10 days if a contact is asymptomatic. However, this will still place those with whom they come into contact at increased risk. The CDC has also suggested that it is acceptable, though still not desirable, to leave quarantine after receiving a negative test result after 7 days of quarantine. This will also increase the risk of exposure to others. Additionally, there has always been insufficient access to tests especially for those who are asymptomatic and this strategy is not feasible.

Therefore, with all due respect to the CDC, Geauga Public Health is recognizing that the biology has not changed and the scientific evidence still suggests that 14 days after exposure is the best practice for quarantine in order to reduce further spread. For those who receive orders of quarantine from Geauga Public Health, your period of quarantine is still 14 days as it has been up to this point. For those who voluntarily enter quarantine because you are aware that you are a contact of someone who is positive, we strongly encourage you to also follow that 14 day quarantine. Leaving quarantine early is a choice that will extend this pandemic and we ask you not to do that for all our sake.

